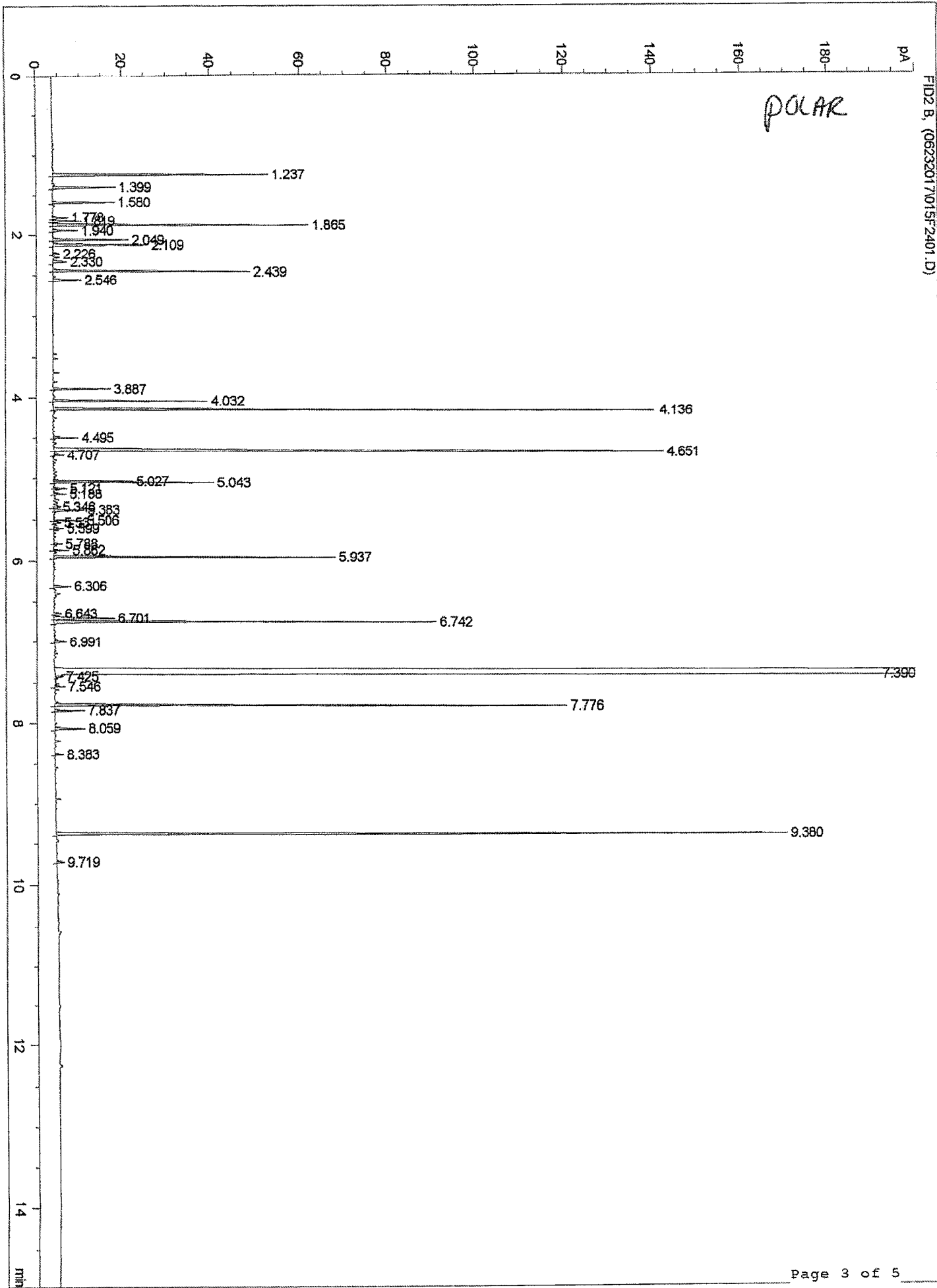


OIL CINNAMON LEAF CEYLON FCC (BLEACHED) C29749

```
=====
Injection Date : 6/23/2017 10:25:13 AM      Seq. Line : 24
Sample Name    : OIL CINNAMON                Location  : Vial 15
                                                Inj      : 1
                                                Inj Volume : 0.1 µl

Sequence File  : C:\HPCHEM\3\SEQUENCE\06232017.S
Method         : C:\HPCHEM\3\METHODS\METHODS3\CAT18.M
Last changed   : 5/3/2017 9:07:40 AM
FAST GC GENERAL OIL METHOD 0.10 COLUMNS
```

POLAR



Totals : 4582.57737 1979.37057

Results obtained with enhanced integrator!

Signal 2: FID2 B,

Peak #	RetTime [min]	Type	Width [min]	Area [pA*s]	Height [pA]	Area %
1	1.237	BP	0.0165	49.34114	49.11767	1.14555
2	1.399	PB	0.0161	14.18172	14.57377	0.32926
3	1.580	BB	0.0153	13.68904	14.46239	0.31782
4	1.778	PB	0.0145	3.29948	3.65660	0.07660
5	1.819	BP	0.0141	5.34472	6.18166	0.12409
6	1.865	BB	0.0132	48.35329	58.26384	1.12262
7	1.940	PB	0.0129	4.68859	5.81191	0.10885
8	2.049	BP	0.0124	13.73797	17.50926	0.31895
9	2.109	BB	0.0150	21.76398	22.07859	0.50529
10	2.226	PB	0.0110	1.10392	1.56307	0.02563
11	2.330	PB	0.0156	3.58737	3.24606	0.08329
12	2.439	VB	0.0107	30.81816	44.97228	0.71550
13	2.546	BB	0.0119	5.21481	6.45525	0.12107
14	3.887	BP	9.30e-3	7.97934	13.21124	0.18526
15	4.032	BB	9.83e-3	23.07394	35.51179	0.53571
16	4.136	BP	9.79e-3	88.54903	136.93552	2.05584
17	4.495	VB	9.09e-3	3.39458	5.78667	0.07881
18	4.651	BV	0.0154	141.65645	138.52248	3.28883
19	4.707	BB	8.43e-3	1.17314	2.21532	0.02724
20	5.027	BV	8.60e-3	10.41364	18.41960	0.24177
21	5.043	VB	9.93e-3	24.17933	36.74709	0.56137
22	5.121	PV	8.74e-3	1.65674	2.97806	0.03846
23	5.188	BP	0.0106	2.01214	2.81357	0.04672
24	5.346	VP	0.0115	1.06621	1.42308	0.02475
25	5.383	BB	0.0123	5.87945	6.99647	0.13650
26	5.506	PV	9.29e-3	4.15494	6.88424	0.09647
27	5.531	VB	0.0116	1.20687	1.59690	0.02802
28	5.599	BV	8.79e-3	1.27433	2.27189	0.02959
29	5.788	PV	8.56e-3	1.01974	1.88569	0.02368
30	5.862	BV	9.31e-3	2.11649	3.62532	0.04914
31	5.937	BB	9.60e-3	38.97552	64.06717	0.90489
32	6.306	BP	0.0132	3.47098	3.96199	0.08059
33	6.643	PB	0.0145	1.64237	1.70218	0.03813
34	6.701	BV	0.0184	16.73860	14.06852	0.38862
35	6.742	VB	0.0123	71.08315	87.08276	1.65033
36	6.991	BP	0.0128	2.27883	2.77653	0.05291
37	7.390	PV	0.0276	3397.65991	1506.85986	78.88334
38	7.425	VB	0.0120	1.26684	1.59304	0.02941
39	7.546	BB	9.52e-3	1.37963	2.29183	0.03203
40	7.776	VP	0.0106	83.49824	116.57750	1.93858
41	7.837	BB	9.85e-3	4.37405	6.93900	0.10155
42	8.059	BB	0.0103	4.93980	6.91355	0.11469
43	8.383	BB	9.91e-3	1.25359	1.97316	0.02910
44	9.380	BP	0.0127	141.56117	166.30902	3.28662
45	9.719	BB	0.0106	1.14252	1.64831	0.02653

Totals : 4307.19574 2650.48172

Results obtained with enhanced integrator!

*** End of Report ***